

LED Flood Light

XALE Series

Features

- LED: Lumileds
- Color Temperature: 5000K (cool white), other colors available
- Color Rendering Index (CRI): > 70
- Long LED life; L₇₀ > 150,000 hours*
- Rated for Ambient Temperatures between -40°C/-40°F to 40°C/104°F
- Power Factor (PF) > 0.9
- Total Harmonic Distribution (THD) < 20%
- Surge protection: 6kV
- Input Voltage: MV: 120 – 277V; 50/60 Hz
- Input Voltage: HV: 277 – 480V; 50/60 Hz
- Dimmable: 0-10Vdc
- Distribution: Type III standard, other types available
- Ultra-durable Powder Coat Paint
- Standard Color Bronze
- UL/cUL Listed
- IP65
- Warranty: 5 years

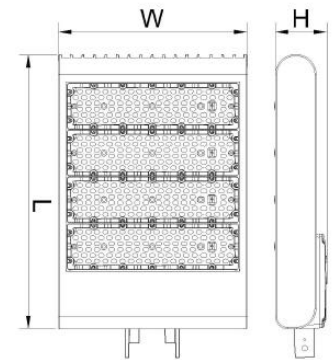
*L₇₀ hours are IES TM-21-11 calculated hours.

Mounting Options

- 6.5" long mounting arm is included with the fixture for square pole mounting
- Slip Fitter (XLE-SF), accessory, can be used to attach fixture to a 2³/₈" OD tenon.
- A round pole adapter (XAL-RPA), accessory, can be used to mount this fixture on round poles, up to 5" diameter.

Dimensions

| Model | Length (in) | Width (in) | Height (in) | Mounting Arm (in) | Effective Projected Area EPA (sf) | Weight (lbs) |
|-----------|--------------------------------|--------------------------------|-------------------------------|---------------------------------------|-----------------------------------|--------------|
| XALE-5100 | 11 | 12 ⁵ / ₈ | 3 ³ / ₈ | Length: 6 ¹ / ₂ | 2.25 | 14.5 |
| XALE-5150 | | | | Depth: 3 ¹ / ₂ | | |
| XALE-5230 | 14 ¹ / ₈ | | 3 ¹ / ₂ | Height: 7 | 2.67 | 18.5 |
| XALE-5300 | 18 ¹ / ₂ | | | 3.29 | 25 | |



| | |
|--------------|--|
| Project: | |
| Catalog#: | |
| Approved by: | |

Applications

- Security
- Outdoor Lighting
- Hotels
- Warehouses
- Parking Lots
- Street Lights
- Parks



Ordering Information

| Model | CCT ¹ | Nominal Input Power | Input Voltage ² | Light Distribution ³ | Driver Identifier (not configurable) | Housing Color ⁴ | Comparable to HID |
|--------------------------------|-------------------|-----------------------------|-----------------------------------|---------------------------------|--------------------------------------|----------------------------|-------------------|
| XALE LED Flood Light | 5 5000K | 100: 97W, 13,475 Lm | MV 120–277V 50/60 Hz | T3 Type 3 | T: Towin | (blank) Bronze | 320W |
| | | 150: 150W, 20,680 Lm | | | | | 400W |
| | | 230: 227W, 31,312 Lm | | | I: Inventronics | | 750W |
| | | 300: 293W, 40,718 Lm | | | | | 1000W |

Call factory for lead times (12-16 weeks typical & MOQ 50 pcs.) on non-stocked options; ¹ CCT - **3**(3000K), **4**(4000K); ²Input Voltage – **HV**(277-480V, 50/60Hz) -Meanwell; ³Light Distribution – **T2**(Type 2), **T3**(Type 3), **T4**(Type 4); ⁴Housing Color – **BK**(Black), **GY**(Gray), **WH**(White)

LED Flood Light
XALE Series

| | |
|--------------|--|
| Project: | |
| Catalog#: | |
| Approved by: | |

Accessories



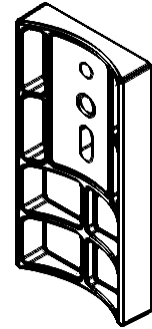
XLE-SF: Slip Fitter



XLE-TR: Trunnion (100/150/230W models)



XLE-TRL: Trunnion (300W model)



XAL-RPA: Round Pole Adapter

Mounting Hole Guide

| | |
|---|--|
| <p>XALE with standard ARM attachment</p> | <p>Trunnion Details</p> <div style="display: flex; justify-content: space-around;"> <div style="text-align: center;"> <p><u>For 100, 150, & 230W w/ trunnion (XLE-TR)</u></p> </div> <div style="text-align: center;"> <p><u>For 300W w/ trunnion (XLE-TRL)</u></p> </div> </div> |
|---|--|

HV Series Performance Details (w/ T3 optic):

| | Output Lumens | | Input Power (W) | Efficacy (LPW) | Comparable to HID |
|---------------------|---------------|------------|-----------------|----------------|-------------------|
| | @4000K CCT | @5000K CCT | | | |
| XALE-*100 HV Series | 14,687 | | 97 | 151 | 320W |
| XALE-*150 HV Series | 21,618 | | 155 | 140 | 400W |
| XALE-*230 HV Series | 32,456 | | 235 | 138 | 750W |
| XALE-*300 HV Series | 41,902 | | 302 | 139 | 1000W |

Where * represents CCT: 4=4000K, 5=5000K

Note: HV Series are non-stocked, there is a typical 12-16 weeks lead time & MOQ 50 pcs.